



22 Wharf Street Wyee Point NSW

4 3 4

Ideally positioned across the road from waterfront properties, 22 Wharf Street, Wyee Point, offers easy access to the water's edge, only 100 metres away, and a local boat ramp just 400 metres away.

With water views from both levels, this solid, substantial family residence sits proudly on two titles with two street frontages and a highly desirable 4-bay shed.

Daily living with no constraints! On the lower level, enjoy the open-plan kitchen, lounge, and dining area with an abundance of windows that allow for warm winter sun and cool summer lake breezes. Also on the lower level is the first of four bedrooms, with private access to one of the three bathrooms, which also services the main living area.

Upstairs, there are three more generous bedrooms, all with

Price : \$988,000
Land Size : 607 sqm
View : <https://www.wilsonbritten.com/sale/nsw/central-coast-region/wyee-point/residential/house/8069023>



Matthew Wilson
02 4970 5545



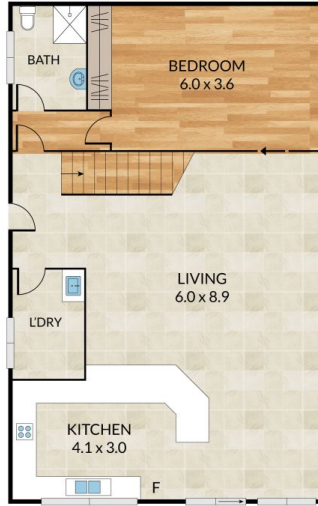
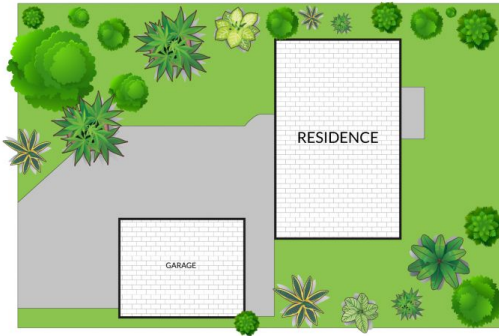
Tom Gregg
02 4970 5545

Internal 181m² External 426m² Total 607m²

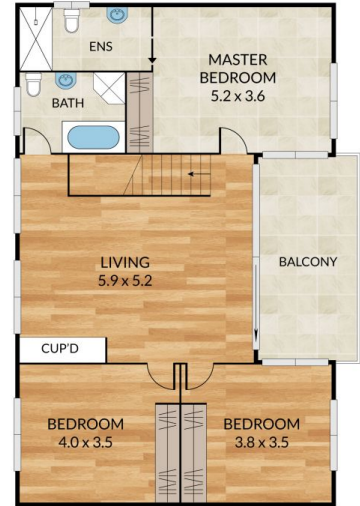
22 Wharf Street, Wye Point



4 x 3 x 2 x



GROUND FLOOR



FIRST FLOOR

wilsonbritten

NOTE: Every precaution has been taken to verify the accuracy of the above details. However, prospective purchasers are advised to make their own enquiries.